

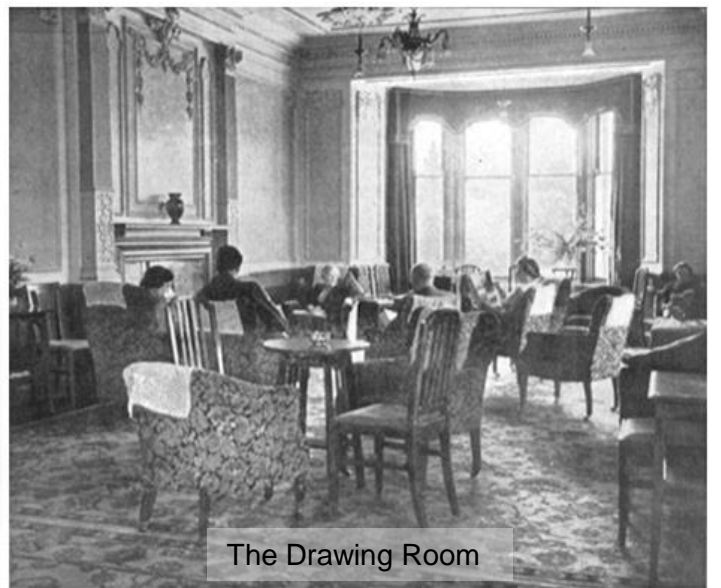
KYLES HYDRO HOTEL BEFORE THE OUTBREAK OF WAR



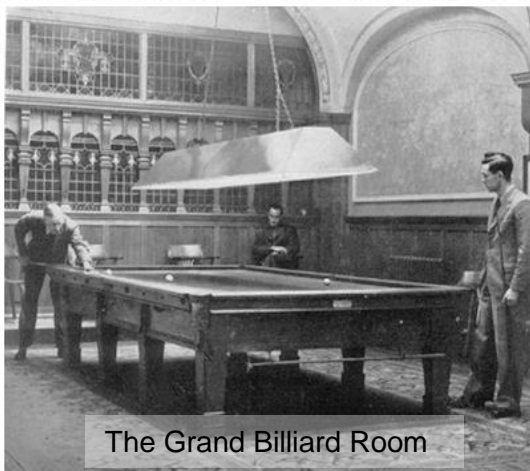
Kyles Hydropathic Hotel in Port Bannatyne, requisitioned by the Admiralty (HQ of HMS Varbel), from the air



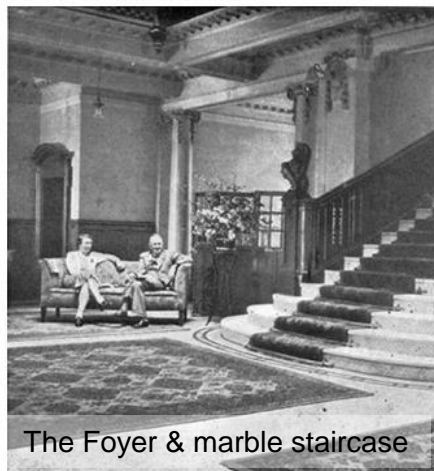
The West Wing & some of the extensive landscaped gardens



The Drawing Room



The Grand Billiard Room



The Foyer & marble staircase



The Main Dining Room



Imposing front entrance



The Ladies Lounge



A standard bedroom

KYLES HYDRO HOTEL IN THE MID-1950s

Source: <http://uk.ebid.net/users/hamsteruk23>



Source: <http://uk.ebid.net/users/hamsteruk23>



For a full account of the Isle of Bute during World War II click here: www.bute-at-war.org